



9 Soil / Slurry

Section Contents

Rotavator Blades	9.2
Harrows	9.2
Excavator Components	9.3
Slurry Components	9.4





Rotavator Blades

Howard "E" Series Blade



- Standard rotavator blade suitable for Howard "E" series
- (Image shows right-hand blade)

Code	Description	Box Qty
G7581	BLADE HOWARD LH 1/2in x 57mm	10
G12422	BLADE HOWARD RH 1/2in x 57mm	10

Howard "T" Series Blade



- Heavy duty rotavator blade suitable for Howard "T" series
- (Image shows left-hand blade)

Code	Description	Box Qty
G7583	BLADE HOWARD LH 5/8in x 51mm	10
G12424	BLADE HOWARD RH 5/8in x 51mm	10

Howard "S" Series Blade



- Heavy duty rotavator blade suitable for Howard "S" series
- (Image shows left-hand blade)

Code	Description	Box Qty
G7584	BLADE HOWARD LH 5/8in x 75mm	10
G12425	BLADE HOWARD RH 5/8in x 75mm	10

Harrows

Harrow Point



- Harrow tine suitable for Zig-Zag
- Available sizes: 7in x 5/8in to 8in x 3/4in

Code	Description	Box Qty
G7595	POINT HARROW SQUARE 7in x 5/8in	1
G7596	POINT HARROW SQUARE 8in x 3/4in	1

KKK S-Tine



- KKK S-Tine complete with point

Code	Description	Box Qty
G7725	TINE-S KKK with POINT	1

Small S-Tine



- Small S-Tine complete with point

Code	Description	Box Qty
G7730	TINE-S SMALL ASSEMBLY	1



Cultivator Point



- Replacement point to suit KKK and Kvernland harrow tines

Code	Description	Box Qty
G7705	POINT KKK 5mm (40x5x190mm)	25
G7707	POINT KVERN 6mm (40x6x190mm)	25
G7713	POINT MF 2.1/2in	1
G7731	POINT for SMALL S-TINE	1

Cultivator Point Holder



- Replacement holder suitable for KKK and Kvernland harrow tines

Code	Description	Box Qty
G7708	HOLDER KKK	25
G7711	HOLDER KVERNELAND	25

S-Tine Holder



- Replacement holder for small S-Tine

Code	Description	Box Qty
G7710	HOLDER SMALL S-TINE	25

Excavator Components

JCB Left Side Side Cutter



- Replacement side tooth suitable for JCB buckets

Code	Description	Box Qty
G14245	CUTTER SIDE JCB R/H	1

JCB Right Side Side Cutter



- Replacement side tooth suitable for JCB buckets

Code	Description	Box Qty
G9175	CUTTER SIDE JCB L/H	1

JCB Bucket Tooth



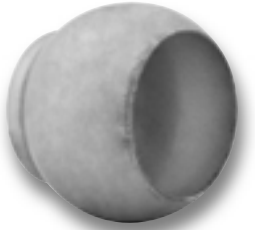
- Replacement centre tooth suitable for JCB buckets

Code	Description	Box Qty
G9173	TOOTH BUCKET JCB	1



Slurry Components

Bauer Male Ball



- Bauer male type weld-on ball
- Finish: self colour
- Available sizes: 2in to 6in

Code	Description	Box Qty
G16080	S/C BAUER MALE BALL 2in	1
G16081	S/C BAUER MALE BALL 3in	1
G16082	S/C BAUER MALE BALL 4in	1
G16083	S/C BAUER MALE BALL 5in	1
G16407	S/C BAUER MALE BALL 6in	1

Bauer Male Clamp Coupling



- Bauer male type lever clamp
- Finish: self colour
- Available sizes: 2in to 6in

Code	Description	Box Qty
G16107	S/C BAUER MALE CLAMP 2in	1
G16108	S/C BAUER MALE CLAMP 3in	1
G16109	S/C BAUER MALE CLAMP 4in	1
G16110	S/C BAUER MALE CLAMP 5in	1
G16111	S/C BAUER MALE CLAMP 6in	1

Bauer Female Head Coupling



- Bauer female type weld-on head only
- Finish: self colour
- Available sizes: 2in to 6in

Code	Description	Box Qty
G16094	S/C BAUER FEM HEAD 2in	1
G16095	S/C BAUER FEM HEAD 3in	1
G16436	S/C BAUER FEM HEAD 4in	1
G16096	S/C BAUER FEM HEAD 5in	1
G16097	S/C BAUER FEM HEAD 6in	1

Italian Male Ball



- Italian male type weld-on ball
- Finish: self colour
- Available sizes: 2in to 6in

Code	Description	Box Qty
G16084	S/C ITALIAN MALE BALL 2in	1
G16085	S/C ITALIAN MALE BALL 3in	1
G16086	S/C ITALIAN MALE BALL 4in	1
G16087	S/C ITALIAN MALE BALL 5in	1
G16088	S/C ITALIAN MALE BALL 6in	1



Italian Male Clip



- Italian male type ball clip
- Finish: self colour
- Available sizes: 2in to 6in

Code	Description	Box Qty
G16112	S/C ITALIAN MALE CLIP 2in	1
G16113	S/C ITALIAN MALE CLIP 3in	1
G16114	S/C ITALIAN MALE CLIP 4in	1
G16115	S/C ITALIAN MALE CLIP 5in	1
G9031	S/C ITALIAN MALE CLIP 6in	1

Italian Female Head



- Italian female type weld-on head
- Finish: self colour
- Available sizes: 2in to 6in

Code	Description	Box Qty
G16098	S/C ITALIAN FEM HEAD 2in	1
G16099	S/C ITALIAN FEM HEAD 3in	1
G16100	S/C ITALIAN FEM HEAD 4in	1
G16101	S/C ITALIAN FEM HEAD 5in	1
G9029	S/C ITALIAN FEM HEAD 6in	1
G16437	S/C ITALIAN FEM HEAD 6in (Q/A)	1

Perrot Male Head



- Perrot male type type weld-on head
- Finish: self colour
- Size: 6in

Code	Description	Box Qty
G16093	S/C PERROT MALE HEAD 6in	1

Perrot Female Head



- Perrot female type weld-on head
- Finish: self colour
- Available size: 6in

Code	Description	Box Qty
G16106	S/C PERROT FEM HEAD 6in	1

Hose Tail



- Weld-on hose tail
- Finish: self colour
- Available sizes: 2in to 6in

Code	Description	Box Qty
G16466	TAIL HOSE S/C ITALIAN 2in	1
G16467	TAIL HOSE S/C ITALIAN 3in	1
G16468	TAIL HOSE S/C ITALIAN 4in	1
G16469	TAIL HOSE S/C ITALIAN 5in	1
G16470	TAIL HOSE S/C ITALIAN 6in	1



90° Bend Slurry Tail Hose



- Weld-on 90° bend
- Finish: self colour
- Available sizes: 4in to 6in

Code	Description	Box Qty
G12260	S/C BEND 90deg 4in	1
G12261	S/C BEND 90deg 5in	1
G16409	S/C BEND 90deg 6in	1

45° Bend Slurry Tail Hose



- Weld-on 45° bend
- Finish: self colour
- Available size: 6in

Code	Description	Box Qty
G16408	BEND S/C 45deg 6in	1

Italian Weld-On Coupling Set



- Italian type weld-on set 6in size
- Finish: self colour
- Size: 6in

Code	Description	Box Qty
G8860	S/C COUPLING ITALIAN SET W/O 6in	1

Bauer No.13 Male Coupling



- Bauer male type coupling with hose end and clamp
- Finish: galvanised
- Available sizes: 2in to 6in

Code	Description	Box Qty
G8974	COUPLING No.13 BAUER MALE 2in	1
G8975	COUPLING No.13 BAUER MALE 3in	1
G8976	COUPLING No.13 BAUER MALE 4in	1
G8977	COUPLING No.13 BAUER MALE 5in	1
G8978	COUPLING No.13 BAUER MALE 6in	1

Bauer No.16 Female Coupling



- Bauer female type coupling with hose tail and o-ring
- Finish: galvanised
- Available sizes: 2in to 6in

Code	Description	Box Qty
G8983	COUPLING No.16 BAUER FEMALE 2in	1
G8984	COUPLING No.16 BAUER FEMALE 3in	1
G8985	COUPLING No.16 BAUER FEMALE 4in	1
G8986	COUPLING No.16 BAUER FEMALE 5in	1
G8987	COUPLING No.16 BAUER FEMALE 6in	1



Italian No.19 Male Coupling



- Italian male type coupling with hose tail and ball end
- Finish: galvanised
- Available sizes: 2in to 6in

Code	Description	Box Qty
G8992	COUPLING No.19 ITALIAN MALE 2in	1
G8993	COUPLING No.19 ITALIAN MALE 3in	1
G8994	COUPLING No.19 ITALIAN MALE 4in	1
G8995	COUPLING No.19 ITALIAN MALE 5in	1
G8996	COUPLING No.19 ITALIAN MALE 6in	1

Italian No.22 Female Coupling



- Italian female type coupling with hose tail and o-ring
- Finish: galvanised
- Available sizes: 2in to 6in

Code	Description	Box Qty
G9001	COUPLING No.22 ITALIAN FEM 2in	1
G9002	COUPLING No.22 ITALIAN FEM 3in	1
G9003	COUPLING No.22 ITALIAN FEM 4in	1
G9004	COUPLING No.22 ITALIAN FEM 5in	1
G9005	COUPLING No.22 ITALIAN FEM 6in	1

Perrot No.28 Female Coupling



- Perrot female type coupling with hose tail, clamp and o-ring
- Finish: galvanised
- Size: 6in

Code	Description	Box Qty
G9023	COUPLING No.28 PERROT FEM 6in	1

Bauer No.14 Male Flange Coupling



- Bauer male type coupling with four bolt flange plate and clamp
- Finish: galvanised
- Size: 6in

Code	Description	Box Qty
G8980	COUPLING No.14 BAUER MALE F 6in	1

Bauer No.17 Female Flange Coupling



- Bauer female type coupling with four bolt flange plate and o-ring
- Finish: galvanised
- Size: 6in

Code	Description	Box Qty
G8989	COUPLING No.17 BAUER FEM FL 6in	1



Italian No.20 Male Flange Coupling



- Italian male type coupling with four bolt flange plate and ball ring
- Finish: galvanised
- Size: 6in

Code	Description	Box Qty
G8998	COUPLING No.20 ITALIAN MALE 6in	1

Italian No.23 Female Flange Coupling



- Italian female type coupling with four bolt flange and o-ring
- Finish: galvanised
- Size: 6in

Code	Description	Box Qty
G9007	COUPLING No.23 ITALIAN FEM 6in	1

Perrot No.26 Male Flange Coupling



- Perrot male type coupling with four bolt flange plate
- Finish: galvanised
- Size: 6in

Code	Description	Box Qty
G9016	COUPLING No.26 PERROT MALE 6in	1

Perrot No. 29 Female Flange Coupling



- Perrot female type coupling with four bolt flange plate and o-ring
- Finish: galvanised
- Size: 6in

Code	Description	Box Qty
G9025	COUPLING No.29 PERROT FEM 6in	1

Bauer No.15 Male Threaded Coupling



- Bauer male type coupling with threaded tube and clamp
- Finish: galvanised
- Available sizes: 2in and 6in

Code	Description	Box Qty
G13982	COUPLING No.15 BAUER MALE 2in	1
G8982	COUPLING No.15 BAUER MALE T 6in	1



Bauer No.18 Female Threaded Coupling



- Bauer female type coupling with threaded tube and o-ring
- Finish: galvanised
- Available sizes: 2in and 6in

Code	Description	Box Qty
G13985	COUPLING No.18 BAUER FEM 2in	1
G8991	COUPLING No.18 BAUER FEM TH 6in	1

Italian No.21 Male Coupling



- Italian male type coupling with threaded tube and ball ring
- Finish: galvanised
- Available sizes: 2in to 6in

Code	Description	Box Qty
G13297	COUPLING No.21 ITALIAN MALE 2in	1
G12231	COUPLING No.21 ITALIAN MALE 3in	1
G12335	COUPLING No.21 ITALIAN MALE 4in	1
G8999	COUPLING No.21 ITALIAN MALE 5in	1
G9000	COUPLING No.21 ITALIAN MALE 6in	1

Italian No.24 Female Coupling



- Italian female type coupling with threaded tube and o-ring
- Finish: galvanised
- Available sizes: 2in to 6in

Code	Description	Box Qty
G13988	COUPLING No.24 ITALIAN FEM 2in	1

Italian No.24 Female Coupling



- Italian female type coupling with threaded tube and o-ring
- Finish: galvanised
- Available sizes: 2in to 6in

Code	Description	Box Qty
G12229	COUPLING No.24 ITALIAN FEM 3in	1
G12334	COUPLING No.24 ITALIAN FEM 4in	1
G9008	COUPLING No.24 ITALIAN FEM 5in	1
G9009	COUPLING No.24 ITALIAN FEM 6in	1

Bauer Male 90° Coupling



- Bauer male type 90° coupling with cone
- Finish: galvanised

Code	Description	Box Qty
G8861	COUPLING BAUER MALE 90deg	1

Bauer Female 90° Coupling



- Bauer female type 90° coupling with cone and o-ring
- Finish: galvanised

Code	Description	Box Qty
G8862	COUPLING BAUER FEM 90deg	1



Italian Male 90° Coupling



- Italian male type 90° coupling with cone
- Finish: galvanised

Code	Description	Box Qty
G8863	COUPLING ITALIAN MALE 90deg	1

Italian Female 90° Coupling



- Italian female type 90° coupling with cone and o-ring
- Finish: galvanised

Code	Description	Box Qty
G8864	COUPLING ITALIAN FEM 90deg	1

Perrot Male 90° Coupling



- Perrot male tpe 90° coupling with cone
- Finish: galvanised

Code	Description	Box Qty
G8865	COUPLING PERROT MALE 90deg	1

Bauer Female Reducer Coupling



- Bauer female type coupling with o-ring and handle
- 6in head size reduced to 2in, 3in, 4in or 5in hose tail
- Finish: self colour

Code	Description	Box Qty
G14274	COUPLING BAUER FEM 6in Red-to 2in	1
G14275	COUPLING BAUER FEM 6in Red-to 3in	1
G14276	COUPLING BAUER FEM 6in Red-to 4in	1
G14277	COUPLING BAUER FEM 6in Red-to 5in	1

Italian Male Reducer Coupling



- Italian male type coupling with ball clip
- 6in head size reduced to 2in, 3in, 4in or 5in hose tail
- Finish: galvanised

Code	Description	Box Qty
G13300	COUPLING ITALIAN MALE 6in Red-to 2in	1
G13301	COUPLING ITALIAN MALE 6in Red-to 3in	1
G13302	COUPLING ITALIAN MALE 6in Red-to 4in	1
G14197	COUPLING ITALIAN MALE 6in Red-to 5in	1



Italian Female Reducer Coupling



- Italian female type coupling with o-ring
- 6in head size reduced to 2in, 3in, 4in or 5in hose tail
- Finish: galvanised

Code	Description	Box Qty
G13303	COUPLING ITALIAN FEM 6in Red-to 2in	1
G13304	COUPLING ITALIAN FEM 6in Red-to 3in	1
G13305	COUPLING ITALIAN FEM 6in Red-to 4in	1
G14198	COUPLING ITALIAN FEM 6in Red-to 5in	1

Perrot Male Reducer Coupling



- Perrot male type coupling
- 6in size reduced to 2in, 3in, 4in or 5in hose tail
- Finish: galvanised

Code	Description	Box Qty
G14264	COUPLING PER MALE 6in Red-to 2in	1
G13938	COUPLING PER MALE 6in Red-to 3in	1
G13939	COUPLING PER MALE 6in Red-to 4in	1
G14265	COUPLING PER MALE 6in Red-to 5in	1

Hose Joiner



- Hose joiner for hose of diameters 3in to 6in
- Finish: galvanised

Code	Description	Box Qty
G14066	JOINER HOSE 3in	1
G14067	JOINER HOSE 4in	1
G12270	JOINER HOSE 5in	1
G8843	JOINER HOSE 6in	1

Italian Male Blank Coupling



- Italian male type blank with handle
- Finish: galvanised
- Available sizes: 5in and 6in

Code	Description	Box Qty
G14244	COUPLING ITALIAN MALE BLANK 5in	1
G12328	COUPLING ITALIAN MALE BLANK 6in	1

Italian Female Blank Coupling



- Italian female type blanking cap with o-ring
- Finish: galvanised
- Available sizes: 5in to 6in

Code	Description	Box Qty
G12236	COUPLING ITALIAN FEM BLANK 5in	1
G12239	COUPLING ITALIAN FEM BLANK 6in	1



Slurry O-Ring



- Used to create a seal between male and female couplings
- Available sizes: 2in to 6in

Code	Description	Box Qty
G8853	O-RING BAUER 2in x 18 x 51mm	1
G8854	O-RING BAUER 3in x 18 x 76mm	1
G8855	O-RING BAUER 4in x 18 x 102mm	1
G8856	O-RING BAUER 5in x 18 x 127mm	1
G8858	O-RING BAUER 6in x 18 x 210mm	1
G13989	O-RING ITALIAN 2in	1
G13990	O-RING ITALIAN 3in	1
G13991	O-RING ITALIAN 4in	1
G13992	O-RING ITALIAN 5in	1
G8857	O-RING ITALIAN 6in	1
G13997	O-RING PERROT 6in	1

Cam Male Coupling With Clips



- Deep groove ball bearing with two rubber seals
- Available sizes: 1.1/2in to 3in

Code	Description	Box Qty
G2137	CAM COUPLING HOSE 1.1/2in c/w Clips	1
G2136A	CAM COUPLING MALE 1.1/2in c/w Clips	1
G2138A	CAM COUPLING MALE 2in c/w Clips	1
G15518	CAM COUPLING MALE 3in c/w Clips	1

Cam Male Adaptor



- Deep groove ball bearing with two rubber seals
- Available sizes: 2in and 3in

Code	Description	Box Qty
G15521	CAM ADAPTOR MALE 2in	1
G15522	CAM ADAPTOR MALE 3in	1

Cam Female Coupling With Clips



- Female cam to female thread
- Finish: galvanised
- Available sizes: 1.1/2in and 3in

Code	Description	Box Qty
G2136	CAM COUPLING FEM 1.1/2in Clips	1
G15517	CAM COUPLING FEM 3in c/w Clips	1

Cam Female Adaptor



- Finish: galvanised
- Available sizes: 1.1/2in and 3in

Code	Description	Box Qty
G15523	CAM ADAPTOR FEMALE 1.1/2in	1
G15525	CAM ADAPTOR FEMALE 3in	1



Cam Hose Adaptor



- Finish: galvanised
- Available sizes: 1.1/2in and 3in

Code	Description	Box Qty
G15526	CAM ADAPTOR HOSE 1.1/2in	1
G15528	CAM ADAPTOR HOSE 3in	1

Perrot Female Quick Attach Coupling



- Perrot female type quick attach with handle, four bolt flange plate and o-ring
- Finish: galvanised

Code	Description	Box Qty
G8833	COUPLING PERROT Q/ATTACH FEM	1

Perrot Male Quick Attach Coupling



- Perrot male type quick attach with handle
- Finish: galvanised

Code	Description	Box Qty
G8834	COUPLING PERROT Q/ATTACH MALE	1

Italian Male Quick Attach Coupling



- Italian male type quick attach with handle and four bolt flange plate
- Finish: galvanised

Code	Description	Box Qty
G8836	COUPLING ITALIAN Q/ATTACH MALE	1

Italian Female Quick Attach Coupling



- Italian female type quick attach with handle and o-ring
- Finish: galvanised

Code	Description	Box Qty
G8835	COUPLING ITALIAN Q/ATTACH FEM	1

Quick Attachment Coupling Handle



- Replacement handle for G8833 and G8836
- Finish: galvanised

Code	Description	Box Qty
G16230	HANDLE for Q/ATTACH COUPLING	1



Quick Attachment Adjustor



- Replacement adjustor for G8833 and G8836
- Finish: galvanised

Code	Description	Box Qty
G16497	ADJUSTOR for Q/ATTACH	1

Bauer No.1 Male Discharge Kit



- Bauer male sprinkler assembly
- Slurry discharged vertically
- Finish: galvanised
- Size: 6in

Code	Description	Box Qty
G8950	KIT DIS No.1 BAUER MALE 6in	1

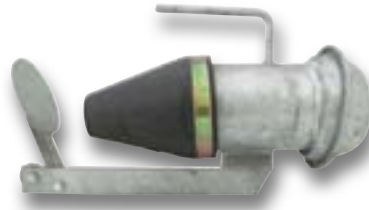
Bauer No.2 Female Discharge Kit



- Bauer female sprinkler assembly
- Slurry discharged vertically
- Finish: galvanised
- Size: 6in

Code	Description	Box Qty
G8952	KIT DIS No.2 BAUER FEMALE 6in	1

Italian No.3 Male Discharge Kit



- Italian male sprinkler assembly
- Slurry discharged vertically
- Finish: galvanised
- Size: 6in

Code	Description	Box Qty
G8954	KIT DIS No.3 ITALIAN MALE 6in	1

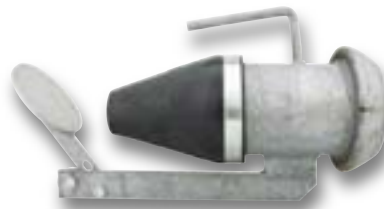
Italian No.4 Female Discharge Kit



- Italian female sprinkler assembly
- Slurry discharged vertically
- Finish: galvanised
- Size: 6in

Code	Description	Box Qty
G8956	KIT DIS No.4 ITALIAN FEM 6in	1

Perrot No.5 Male Discharge Kit



- Perrot male sprinkler assembly
- Slurry discharged vertically
- Finish: galvanised
- Size: 6in

Code	Description	Box Qty
G8958	KIT DIS No.5 PERROT MALE 6in	1



Perrot No.6 Female Discharge Kit



- Perrot female sprinkler assembly
- Slurry discharged vertically
- Finish: galvanised
- Size: 6in

Code	Description	Box Qty
G8961	KIT DIS No.6 PERROT FEMALE 6in	1

Italian No.9 Male 45° Discharge Kit



- Italian male sprinkler assembly
- Slurry discharged vertically downwards
- Finish: galvanised
- Size: 6in

Code	Description	Box Qty
G8967	KIT DIS No.9 ITAL MALE 45deg 6in	1

Bauer No.7 Male 45° Discharge Kit



- Bauer male sprinkler assembly
- Slurry discharged vertically downwards
- Finish: galvanised
- Size: 6in

Code	Description	Box Qty
G8963	KIT DIS No.7 BAUER MAL 45deg 6in	1

Italian No.10 Female 45° Discharge Kit



- Italian female sprinkler assembly
- Slurry discharged vertically downwards
- Finish: galvanised
- Size: 6in

Code	Description	Box Qty
G8969	KIT DIS No.10 ITAL FEM 45deg 6in	1

Bauer No.8 Female 45° Discharge Kit



- Bauer female sprinkler assembly
- Slurry discharged vertically downwards
- Finish: galvanised
- Size: 6in

Code	Description	Box Qty
G8965	KIT DIS No.8 BAUER FEM 45deg 6in	1

Perrot No.11 Male 45° Discharge Kit



- Perrot male sprinkler assembly
- Slurry discharged vertically downwards
- Finish: galvanised
- Size: 6in

Code	Description	Box Qty
G8971	KIT DIS No.11 PER MALE 45deg 6in	1



Perrot No.12 Female 45° Discharge Kit



- Perrot female sprinkler assembly
- Slurry discharged vertically downwards
- Finish: galvanised
- Size: 6in

Code	Description	Box Qty
G8973	KIT DIS No.12 PER FEM 45deg 6in	1

Round Splash Plate With Arm



- Suitable for couplings G8950 to G8961
- Finish: galvanised
- Size: 6in

Code	Description	Box Qty
G13785	PLATE SPLASH ROUND 6in	1

Round Splash Plate



- Suitable for G13785
- Finish: self colour
- Size: 6in

Code	Description	Box Qty
G15612	PLATE ROUND S/C for 6in SPLASH	1

V-Shape Splash Plate With Arm



- Suitable for couplings G8963 to G8973
- Finish: galvanised

Code	Description	Box Qty
G13293	PLATE SPLASH V-SHAPE c/w ARM	1

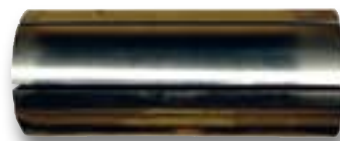
Wide Splash Plate With Arm



- Suitable for couplings G8963 to G8973
- Finish: galvanised

Code	Description	Box Qty
G13295	PLATE SPLASH SQ. WIDE c/w ARM	1

Battioni MEC 8000 Rotor



- Replacement rotor suitable for Battioni 8,000 litre pump

Code	Description	Box Qty
G12728	AMEC5/M Rotor (MEC 8000)	0

Battioni Key for MEC 5/8000



- Replacement keyway suitable for AM5 rotor on Battioni 8,000 litre pump

Code	Description	Box Qty
G12735	AM6 Key for MEC 5/8000	0



Battioni ME26 Gear



- Replacement gear suitable for Battioni 8,000 litre pump

Code	Description	Box Qty
G12732	AME26 GEAR c/w Shaft (MEC8000)	0

Battioni AM Pinion



- Replacement gear suitable for Battioni 8,000 litre pump

Code	Description	Box Qty
G15552	AM Pinion (Z21-M2.5)	1

Battioni Pinion



- Replacement gear suitable for Battioni 8,000lb pump

Code	Description	Box Qty
G12727	AME33 PINION (Z23-M2.5)	1

Battiono AM60 Handle



- Replacement handle suitable for Battioni 8,000 litre pump

Code	Description	Box Qty
G12729	AM60 HANDLE NEW TYPE	1

Battioni AM32 Self Locking Nut



- Replacement self locking nut for Battioni vacum pump
- Finish: zinc plated

Code	Description	Box Qty
G14221	AM32 Self-locking Nut (M24x 2)	1

Battioni AME7 Vane



- Replacement vane for Battioni 8,000 litre pump
- 7 per set

Code	Description	Box Qty
G8822	AME7 VANES BATTIONI (7)	1

Battioni AM37 Manifold



- Replacement top manifold gasket suitable for Battioni 8,000 litre pump

Code	Description	Box Qty
G14224	AM37 Manifold Side Gasket	1

Battioni AM36 Exhaust Elbow



- Replacement exhaust elbow suitable for Battioni 8,000 litre pump

Code	Description	Box Qty
G12731	AM36 EXHAUST ELBOW	1

Battioni AME61 Top Manifold



- Replacement top manifold suitable for Battioni 8,000 litre pump

Code	Description	Box Qty
G14132	AME61 TOP MANIFOLD 80mm	1

Battioni AM47 Reversing Gear



- Replacement input gear suitable for Battioni 8,000 litre pump

Code	Description	Box Qty
G13980	AM47 GEAR REVERSING	0

Battioni ALF7 Pump Housing



- Replacement oil lubricating pump suitable for Battioni 8,000 litre pump

Code	Description	Box Qty
G15436	ALF7 Housing Pump Lubricating	1

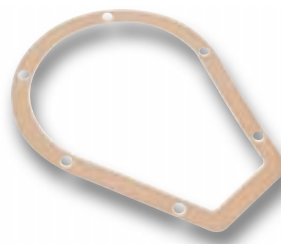
Battioni AMD Front Cover



- Replacement front plate cover for Battioni 8,000 litre pump

Code	Description	Box Qty
G13363	AM29 FRONT COVER ONLY-PEAR	1

Battioni AM28 Gearbox Cover



- Replacement front plate cover gasket for AM29

Code	Description	Box Qty
G14220	AM28 Gearbox Cover Gasket	1

Battioni AM10 Oil Level Dipstick



- Replacement dipstick for Battioni 8,000 litre pump

Code	Description	Box Qty
G12739	AM10 Oil Level Dipstick (79mm)	1

Battioni AM46 Rubber Hose

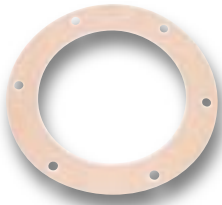


- Replacement hose suitable for Battioni 8,000 litre and 10,000 litre pump

Code	Description	Box Qty
G14131	AM46 Rubber Hose	0



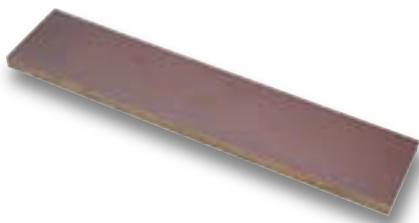
Battioni AM4 Flange Gasket



- Replacement gasket suitable for Battioni 8,000 litre pump

Code	Description	Box Qty
G14204	AM4 Flange Gasket	1

Battioni 10,000L Vane



- Replacement vane suitable for Battioni 10,000 litre pump
- 6 per set

Code	Description	Box Qty
G16218	VANES BATTIONI 10000ltr (6)	1

Battioni AM21 Oil Plug



- Replacement plug suitable for Battioni 8,000 litre and 10,000 litre pump

Code	Description	Box Qty
G14215	AM21 Oil Plug (3/8in Gas)	1

Hertell Vacum Pump



- Rotary blade vacuum pump suitable for vacuum tankers
- The rotor and body of are made of steel-like GGG, three times more resistant than normal cast iron
- Equipped with one oil pump to provide lubrication of the pump both during vacuum and pressure operation
- Pump is connected to the pump rotor
- Also suitable for hydraulic drive

Code	Description	Box Qty
G16211	PUMP VACUUM HERTELL 8000Ltr	1
G16212	PUMP VACUUM HERTELL 10000Ltr	1

Hertell Pump Gasket



- Replacement back plate gasket for 8,000 litre (G16211) and 10,000 litre (G16212) Hertell pumps
- One gasket per pump

Code	Description	Box Qty
G16579	GASKET for HERTELL PUMPS (4) N18	1
G16236	GASKET for HERTELL PUMPS (4) N30	1
G16581	GASKET for HERTELL PUMPS (4) N42	1
G16582	GASKET for HERTELL PUMPS (4) N46	1
G16583	GASKET for HERTELL PUMPS (4) N53	1

Hertell Pump Exhaust Gasket



- Replacement gasket for 8,000 litre (G16211) and 10,000 litre (G16212) Hertell pumps
- One gasket per pump

Code	Description	Box Qty
G16580	EXHAUST GASKET for HERTELL PUMPS (4) N24	1



Hertell Vane



- Replacement vane for Hertell 8,000 litre pump (G16211) and 10,000 litre pump (G16212)
- 6 vanes per set

Code	Description	Box Qty
G16233	VANES for HERTELL 8000ltr ()	1
G16234	VANES for HERTELL 10000ltr ()	1

Vacuum Ram And Spring Kit



- Spring loaded hydraulic ram
- Suitable for gate valves: G8870, G8871, G16698, G12272, G16645 and G12273

Code	Description	Box Qty
G8867	RAM VACUUM & SPRING KIT	1

Vacuum Ram



- Replacement ram suitable for G8867

Code	Description	Box Qty
G8868	RAM HYD VACUUM ONLY	1

Vacuum Ram Spring



- Replacement ram spring suitable for G8867

Code	Description	Box Qty
G8869	SPRING for VACUUM RAM	1

Bolt x Bolt Stem Gate Valve



- Bolt to bolt gate valve

Code	Description	Box Qty
G8870	VALVE STEM GATE Bolt x Bolt	1
G16698	VALVE GATE BRASS 6" MZ	

Bolt x Thread Stem Gate Valve



- Flange thread gate valve

Code	Description	Box Qty
G8871	VALVE STEM GATE Bolt x Thread	1



Thread x Thread Stem Gate Valve



- Gate valve thread x thread

Code	Description	Box Qty
G8871A	VALVE STEM GATE Thread xThread	1

Heavy Duty Flange x Flange Bell Type Stem Valve



- Heavy duty gate valve flange x flange

Code	Description	Box Qty
G12272	VALVE STEM BELL-TYPE BxB	1

Flange x Flange Bell Valve



- Heavy duty gate valve flange

Code	Description	Box Qty
G16645	BELL VALVE F/F-NEW TYPE	1

Heavy Duty Thread x Thread Stem Bell Valve



- Heavy duty thread gate valve

Code	Description	Box Qty
G12273	VALVE STEM BELL-TYPE TxT	1

Stem Valve Rod



- Replacement rod for gate valves (G8870 and G8872)

Code	Description	Box Qty
G8873	ROD for STEM VALVE	1

Stem Valve Seal



- Replacement seal for all standard and bell valve gate valves

Code	Description	Box Qty
G15450	SEAL WHITE-PVC for STEM VALVE	1



Stem Valve O-Ring



- Replacement o-ring for all standard and bell valve gate valves

Code	Description	Box Qty
G8875	O-RING for SLURRY STEM VALVE	1

Stem Valve Clevis



- Replacement clevis for all standard and bell type gate valves

Code	Description	Box Qty
G8874	CLEVIS for STEM VALVE	1

Threaded Top



- Replacement top cap for heavy duty bell valve (G12273)

Code	Description	Box Qty
G16632	Threaded Top for G12273	1

Heavy Duty Stem Gate Valve Tongue



- Replacement tongue for heavy duty MZ valve (G16645)

Code	Description	Box Qty
G8872A	TONGUE H/D for STEM GATE VALVE	1

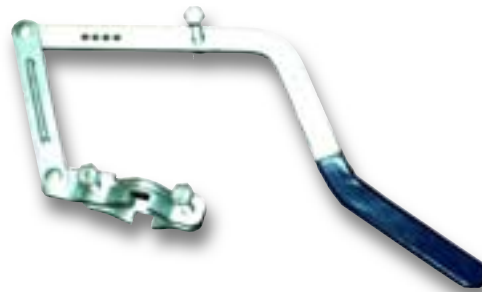
Light Duty Stem Gate Valve Tongue



- Replacement tongue for MZ gate valve (G8870, G8871 and G8872)

Code	Description	Box Qty
G8872	TONGUE L/D for STEM GATE VALVE	1

Gate Valve Handle



- Manual handle for opening and closing standard gate valve

Code	Description	Box Qty
G16658	VALVE HANDLE MANUAL 4in-6in	1

Straight Safety Valve



- Automatically senses change in flow and shuts off in the event of a surge in pressure
- Automatically resets when the line is changed

Code	Description	Box Qty
G16646	SAFETY VALVE 11/2in STRAIGHT	1



Vacuum Pump Safety Valve



- Vacuum pump safety valve suitable for Battioni and Hertell brands
- BSP thread

Code	Description	Box Qty
G8827	VALVE SAFETY 1.1/2in	1
G13581	VALVE SAFETY 2in	1

Decompression Valve



- 1.1/2in BSP male thread

Code	Description	Box Qty
G13298	VALVE DECOMPRESSION 1.1/2in	1

Siphon Float Valve



- Available in 60mm and 80mm hose connections
- Mainly used as a secondary trap
- Available sizes: 60mm and 80mm

Code	Description	Box Qty
G8828	VALVE SIPHON FLOAT 60mm	1
G8829	VALVE SIPHON FLOAT 80mm	1
G16343	GLASS for SIPHON VALVE (UNIV)	1

Gate Valve



- Shut off gate valve
- Material: brass
- All BSP female threads
- Available sizes: 3/8in to 3in

Code	Description	Box Qty
G8898	VALVE GATE 3/8in	1
G8899	VALVE GATE 1/2in	1
G8900	VALVE GATE 3/4in	1
G8901	VALVE GATE 1in	1
G8902	VALVE GATE 1.1/4in	1
G8903	VALVE GATE 1.1/2in	1
G8904	VALVE GATE 2in	1
G8905	VALVE GATE 2.1/2in	1
G8906	VALVE GATE 3in	1

Lever Valve



- Lever type shut off valve
- Female x female
- Available sizes: 1/4in to 4in

Code	Description	Box Qty
G8907A	VALVE LEVER 1/4in	1
G8908	VALVE LEVER 3/8in	1
G8909	VALVE LEVER 1/2in	1
G8910	VALVE LEVER 3/4in	1
G8911	VALVE LEVER 1in	1
G8912	VALVE LEVER 1.1/4in	1
G8913	VALVE LEVER 1.1/2in	1
G8914	VALVE LEVER 2in	1
G8915	VALVE LEVER 2.1/2in	1
G8916	VALVE LEVER 3in	1
G8917	VALVE LEVER 4in	1
G15617	VALVE LEVER 90deg 1/2in	1

Flange Plate



- Weld-on 4 bolt flange plate
- Finish: self colour
- Tube diameter: 6in

Code	Description	Box Qty
G8832	FLANGE-PLATE 4-BOLT 6in	1

Flange Hose End



- Weld-on 4 bolt flange hose end
- Finish: self colour
- Tube diameter: 6in

Code	Description	Box Qty
G8831	FLANGE HOSE END 4-BOLT 6in	1

Blank Flange Plate



- 4 bolt blank flange plate
- Finish: self colour

Code	Description	Box Qty
G11093	FLANGE-PLATE 4-BOLT (BLANK)	1

Threaded Tube



- Weld-on 6in threaded tube
- Finish: self colour

Code	Description	Box Qty
G8844	TUBE THREADED 6in	1

Ball Indicator



- Siphon valve ball indicator
- Available sizes: 60mm to 120mm

Code	Description	Box Qty
G8922	BALL RUBBER 60mm	1
G8923	BALL RUBBER 80mm	1
G8924	BALL RUBBER 100mm	1
G8925	BALL PLASTIC 120mm	1

Rubber Cone



- Replacement rubber cone for discharge kit (G8949 to G8973)
- Size: 6in

Code	Description	Box Qty
G8852	CONE RUBBER 6in - 150mm	1



Hook Bolt For Slurry Tank Rear Door



- M20 rear door hook
- Finish: zinc plated

Code	Description	Box Qty
G8927	HOOK SLURRY-TANK REAR-DOOR	1
G12742	HOOK BOLT for TANK DOOR 20mm	1

Slurry Tank Door Nut



- M20 rear door nut
- Finish: zinc plated

Code	Description	Box Qty
G12743	NUT for TANK DOOR 20mm	1

Pressure Gauge



- Pressure gauge for 8,000 litre (G16211) and 10,000 litre (G16212) Hertell pumps

Code	Description	Box Qty
G8825A	GUAGE DRY 1/4in x 60mm	1
G8826A	GUAGE DRY 1/2in x 100mm	1

Steel Ring For Inspection Glass



- Weld-on steel ring for observation glass (G8918 and G8920)
- Available sizes: 2in and 3in

Code	Description	Box Qty
G8919	RING STEEL for 2in INSPEC GLASS	1
G8921	RING STEEL for 3in INSPEC GLASS	1

Inspection Glass With O-Ring



- Observation glass complete with o-ring
- Thread: BSP
- Available sizes: 2in and 3in

Code	Description	Box Qty
G8918	GLASS INSPECTION 2in + O-RING	1
G8920	GLASS INSPECTION 3in + O-RING	1

Slurry Strainer



- Suction hose strainers
- Finish: yellow passivated
- Available sizes: 1in and 4in

Code	Description	Box Qty
G8888	STRAINER BZP 1in	1
G8889	STRAINER BZP 1.1/4in	1
G8890	STRAINER BZP 1.1/2in	1
G8891	STRAINER BZP 2in	1
G8892	STRAINER BZP 3in	1
G8893	STRAINER BZP 4in	1



Slurry Water Jet



- Finish: galvanised

Code	Description	Box Qty
G15027	JET WATER 2in x 1in x229mm (HDG)	1

Slurry Pump Bearing Rubber



- Replacement rubber agitator bearing
- Suitable for: Belmac, Conor and Wexoman agitators

Code	Description	Box Qty
G11043	BEARING RUBBER SLURRY PUMP	1

Single Lubricator



- Replacement lubricator suitable for Battioni and Hertell pumps
- Thread: 1/4in BSP

Code	Description	Box Qty
G8823	LUBRICATOR SINGLE	1

Double Lubricator



- Replacement lubricator suitable for Battioni and Hertell pumps
- Thread: 1/4in BSP

Code	Description	Box Qty
G8824	LUBRICATOR DOUBLE	1