

An aerial photograph of a red tractor with a white cab and a large orange slurry tank, driving through a lush green field. The tractor is leaving a dark trail behind it. In the background, there are rolling green hills, a stone wall, and some trees. The sky is not visible. The image is framed by a large, stylized red and dark blue geometric shape on the right side.

# GENFITT

**BE SLURRY READY**

## **SLURRY PROMOTION 2023/2024**

Promotion Ending January 31st 2024

**GENFITT**

**SPEND OVER €1,000**  
and get an additional

**10%**  
DISCOUNT

**BE READY**  
Slurry Season is Here!

Place your Slurry Order in December for Delivery  
in January - Before the Slurry Season re-opens.

T's & C's - All orders must be placed by December 22nd to avail of the special discount.

All orders must be placed by December 22nd  
to avail of the special discount.





### BAUER MALE HOSETAIL COUPLING NO. 13

Bauer male type coupling with hoesetail and clamp. Galvanised finish.  
End type 1: **Clamp Coupling.**  
End type 2: **Hose Tail.**

<b>G8974</b>	<b>2in</b>
<b>G8975</b>	<b>3in</b>
<b>G8976</b>	<b>4in</b>
<b>G8977</b>	<b>5in</b>
<b>G8978</b>	<b>6in</b>



### BAUER FEMALE HOSETAIL COUPLING NO. 16

Bauer female type coupling with hoesetail and clamp. Galvanised finish.  
End type 1: **Female Flange.**  
End type 2: **Hose Tail.**

<b>G8983</b>	<b>2in</b>
<b>G8984</b>	<b>3in</b>
<b>G8985</b>	<b>4in</b>
<b>G8986</b>	<b>5in</b>
<b>G8987</b>	<b>6in</b>



### ITALIAN MALE HOSETAIL COUPLING NO. 19

Italian coupling with hose tail and ball end. Galvanised finish.  
End type 1: **Ball Coupling.**  
End type 2: **Hose Tail.**

<b>G8992</b>	<b>2in</b>
<b>G8993</b>	<b>3in</b>
<b>G8994</b>	<b>4in</b>
<b>G8995</b>	<b>5in</b>



### ITALIAN MALE HOSETAIL COUPLING NO. 19

Code: **G8996**

Italian coupling with hose tail and ball end. Galvanised finish.  
End type 1: **Ball Coupling.**  
End type 2: **Hose Tail.**

**Size: 6in**

DISCOUNT

**SALE**



### ITALIAN FEMALE HOSETAIL COUPLING NO. 22

Italian coupling with hose tail and clamps. Galvanised finish.  
End type 1: **Clamp Coupling.**  
End type 2: **Hose Tail.**

<b>G9001</b>	<b>2in</b>
<b>G9002</b>	<b>3in</b>
<b>G9003</b>	<b>4in</b>
<b>G9004</b>	<b>5in</b>



### ITALIAN FEMALE HOSETAIL COUPLING NO. 22

Code: **G9005**

Italian coupling with hose tail and clamps. Galvanised finish.  
End type 1: **Clamp Coupling.**  
End type 2: **Hose Tail.**

**Size: 6in**

DISCOUNT

**SALE**



### ITALIAN FEMALE THREADED COUPLING NO. 24

Code: **G9009**

Italian coupling with threaded tube and clamps. Galvanised finish.  
End type 1: **Clamp Coupling**.  
End type 2: **Threaded Tube**.

**Size: 6in**



### ITALIAN MALE THREADED COUPLING NO. 21

Code: **G9000**

Italian coupling with threaded tube and ball ring. Galvanised finish.  
End type 1: **Ball Coupling**.  
End type 2: **Threaded Tube**.

**Size: 6in**



### ITALIAN FEMALE REDUCER COUPLING

Italian female type coupling with clamps and reduced hoesail. Galvanised finish. End type 1: **Clamp Coupling**. End type 2: **Hose Tail**.

**Size: 6in Reducer**

<b>G13303</b>	<b>6 x 2in</b>
<b>G13304</b>	<b>6 x 3in</b>
<b>G13305</b>	<b>6 x 4in</b>
<b>G14198</b>	<b>6 x 5in</b>

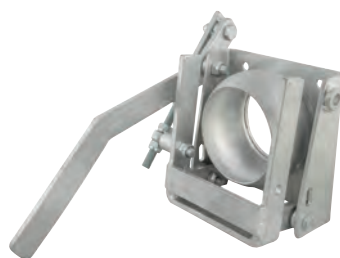


### ITALIAN MALE COUPLING (TANKER SIDE)

Code: **G8836**

Italian male type coupling with handle and four bolt flange. End type 1: **Quick Attach**.  
End type 2: **4 Bolt Flange**.

**Size: 6in (152.4mm)**



### ITALIAN SHORT STYLE MALE COUPLING

Code: **G17694**

Italian short style male type coupling with handle and four bolt flange. End type 1: **Quick Attach**.  
End type 2: **4 Bolt Flange**.

**Size: 6in (152.4mm)**



### ITALIAN FEMALE COUPLING (HOSE SIDE)

Code: **G8835**

Italian female type coupling with Handle. End type 1: **Quick Attach**. End type 2: **Hose Tail**.

**Size: 6in (152.4mm)**

DISCOUNT

SALE

DISCOUNT

SALE

DISCOUNT

SALE



**ITALIAN QUICK ATTACH  
FEMALE REDUCER COUPLING**

Italian type female reducer coupling with quick attach. Supplied with handle.

End type 1: **Quick Attach.**

End type 2: **Hose Tail.**

<b>G17418</b>	<b>6 x 2in</b>
<b>G17419</b>	<b>6 x 3in</b>
<b>G17420</b>	<b>6 x 4in</b>



**PERROT FEMALE  
COUPLING (TANKER SIDE)**

Code: **G8833**

Perrot quick attach with handle, four bolt flange plate and o-ring.

End type 1: **Quick Attach.** End

type 2: **4 Bolt Flange.**

**Size: 6in (152.4mm)**

DISCOUNT

**SALE**



**PERROT SHORT STYLE  
FEMALE COUPLING**

Code: **G17994**

Perrot quick attach with handle, four bolt flange plate and o-ring.

End type 1: **Quick Attach.** End

type 2: **4 Bolt Flange.**

**Size: 6in (152.4mm)**

DISCOUNT

**SALE**



**PERROT MALE  
COUPLING (HOSE SIDE)**

Code: **G8834**

Perrot male type coupling. End type 1: **Quick Attach.**

End type 2: **Hosetail.**

**Size: 6in (152.4mm)**

DISCOUNT

**SALE**



**PERROT MALE  
REDUCER COUPLING**

Perrot male type quick attach coupling with reduced hosetail.

End type 1: **Quick attach.**

End type 2: **Hose Tail.**

**Size: 6in Reducer**

<b>G14264</b>	<b>6 x 2in</b>
<b>G13938</b>	<b>6 x 3in</b>
<b>G13939</b>	<b>6 x 4in</b>



**BAUER MALE COUPLING  
(TANKER SIDE)**

Code: **G17721**

Bauer male type quick attach with handle and four bolt flange plate.

End type 1: **Quick Attach.** End type 2: **4 Bolt Flange.**

**Size: 8in (203.2mm)**



**BAUER FEMALE COUPLING  
(TANKER SIDE)**

Code: **G17722**

Bauer female type quick attach with handle and four bolt flange plate.  
End type 1: **Quick Attach**.  
End type 2: **Hose Tail**.  
**Size: 8in (203.2mm)**



**RUBBER FLANGE  
PLATE 4-BOLT BLANK**

Code: **G20390**

Rubber gasket for 4 bolt flange.  
Full rubber square with hole pattern.  
**Size: 150 x 150mm**



**ITALIAN MALE FLANGE  
COUPLING NO. 20**

Code: **G8998**

Italian male type coupling with four bolt flange plate and ball ring.  
End type 1: **Ball Coupling**. End type 2: **4 Bolt Flange**. **Size: 6in, (152.4mm) Length: 260mm**

DISCOUNT

**SALE**



**ITALIAN MALE FLANGE  
COUPLING NO. 20**

Code: **G19471**

Italian male type coupling with four bolt flange plate and ball ring.  
End type 1: **Ball Coupling**. End type 2: **4 Bolt Flange**. **Size: 6in, (152.4mm) Length: 150mm**

DISCOUNT

**SALE**



**ITALIAN FEMALE  
DISCHARGE KIT NO. 10**

Code: **G17695**

Italian female sprinkler assembly with wide double splash plate three clamp closing. End type 1: **Clamp Coupling**. End type 2: **Rubber Cone**. Position: **45°**.  
**Size: 6in (152.4mm)**

DISCOUNT

**SALE**



**ITALIAN FEMALE  
DISCHARGE KIT NO. 10**

Code: **G16992**

Italian female sprinkler assembly with wide square splash plate two clamp closing. End type 1: **Clamp Coupling**. End type 2: **Rubber Cone**. Position: **45°**.  
**Size: 6in (152.4mm)**

DISCOUNT

**SALE**



**ITALIAN MALE DISCHARGE  
KIT NO. 9 (SQUARE PLATE)**

**Code: G16991**

Italian male sprinkler assembly with wide square splash plate.

End type 1: **Ball and Ring.**

End type 2: **Rubber Cone.**

Position: **45°.**

**Size: 6in (152.4mm)**



**BAUER MALE DISCHARGE  
KIT NO. 7 / SQUARE PLATE**

**Code: G8963**

Bauer male sprinkler assembly.

End type 1: **Clamp Coupling.**

End type 2: **Rubber Cone.**

Position: **45°.**

**Square Splash Plate.**

**Size: 6in (152.4mm)**

**DISCOUNT**

**SALE**



**BAUER FEMALE DISCHARGE  
KIT NO. 8 (SPLASH PLATE)**

**Code: G8965**

Bauer female sprinkler assembly.

End type 1: **O-Ring Coupling.**

End type 2: **Rubber Cone.**

Position: **45°.**

**Square Splash Plate.**

**Size: 6in (152.4mm)**

**DISCOUNT**

**SALE**

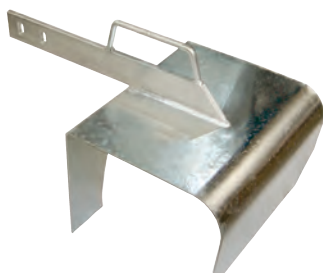


**WIDE SPLASH  
PLATE WITH ARM**

**Code: G13295**

Replacement wide splash plate.

Suitable for couplings G8963 to G8973, G16991, G16992, G17695 and G1769.



**LARGE DOUBLE SPLASH  
PLATE WITH ARM**

**Code: G17827**

Replacement double wide

splash plate. Suitable for couplings G8963 to G8973, G16991, G16992 and G17695.



**ITALIAN MALE 90°  
COUPLING WITH SPOUT**

**Code: G8863**

Italian 90° coupling with male ball end and spout with cone.

End type 1: **Ball and Ring**

End type 2: **Spout.** Position: **90°.**

**Size: 6in (152.4mm)**




**ITALIAN FEMALE 90°  
COUPLING WITH SPOUT**

Code: **G8864**

Italian 90° coupling spout with cone.

End type 1: **Clamp Coupling.**

End type 2: **Spout.**

Position: **90°.**

**Size: 6in (152.4mm)**


**ITALIAN FEMALE 90°  
COUPLING WITH HOSETAIL**

Italian 90° coupling with hosetail.

End type 1: **Female Clamp Coupling.**

End type 2: **Hosetail.**

**Size: 6in (152.4mm)**

<b>G18618</b>	<b>6 x 4in</b>
<b>G18619</b>	<b>6 x 5in</b>
<b>G18620</b>	<b>6 x 6in</b>


**ITALIAN FEMALE  
BLANK COUPLING**

Code: **G12239**

Italian blanking cap with o-ring.

End type 1: **Clamp Coupling.**

End type 2: **Blank.**

**Size: 6in (152.4mm)**


**BAUER MALE 90°  
COUPLING WITH HOSETAIL**

Bauer male type 90° coupling with hosetail and clamp.

End type 1: **Clamp Coupling.**

End type 2: **Hosetail.**

<b>G17368</b>	<b>6 x 6in</b>
<b>G17369</b>	<b>6 x 5in</b>
<b>G17370</b>	<b>5 x 5in</b>


**STORZ 100 x 4in  
HOSE END**

Code: **HD218026**

Cam Distance: 115mm.

Length 83mm.

Material Forged Aluminium.

**NEW**

**STORZ 100 x 4in  
FEMALE THREAD**

Code: **HD217036**

Cam Distance: 115mm.

Connection Thread Type BSP.

Material Forged Aluminium.

**NEW**





**STORZ RING  
CLAMP 4in**

Code: **HD218126**

Storz Clamp Ring 101.5mm for  
2.8 - 3.2mm wall thickness.

**NEW**



**STORZ RING 125 x 5in  
HOSE END**

Code: **HD218028**

Cam Distance 148mm.  
Length 90mm.

**NEW**



**STORZ COUPLING  
125 x 5in FEMALE THREAD**

Code: **HD1255BI**

Cam Distance 148mm.  
Connection Thread Type BSP.

**NEW**



**STORZ RING  
CLAMP 5in**

Code: **HD218128**

Storz Clamp Ring 127mm for  
2.8 - 3.2mm wall thickness.

**NEW**

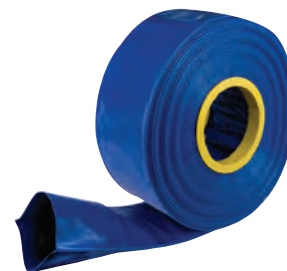


**STORZ SUCTION/  
PRESSURE GASKET**

Code: **HD217083**

100mm/4" Suction/Pressure  
Gasket Storz Pawl 115mm.

**NEW**



**BLUE LAYFLAT HOSE**

Code: **G2168**

Ideal for Agricultural irrigation,  
construction and shipbuilding  
industries, mining and industry  
in general. Sold per metre.

**Size: 2in**  
**Length: 100m Roll**

**DISCOUNT  
SALE**

**YELLOW LAYFLAT HOSE**

Smooth cover. Very high adhesion between inner and outer layers.

**Sold per metre.**

**Length: 100m Roll**

<b>G2177</b>	<b>2in</b>
<b>G2181</b>	<b>5in</b>

**DISCOUNT**

**SALE**

**BLUE LAYFLAT HOSE**

Smooth and seamless black inner surface, particularly resistant to elongation. Smooth cover. Very high adhesion between inner and outer layers. Sold per roll.

**Length: 25m Roll**

<b>G19360</b>	<b>3in</b>
<b>G19361</b>	<b>4in</b>
<b>G19362</b>	<b>6in</b>

**YELLOW LAYFLAT HOSE**

Smooth and seamless black inner surface, particularly resistant to elongation. Smooth cover. Very high adhesion between inner and outer layers. Sold per roll.

**Length: 25m Roll**

<b>G19363</b>	<b>4in</b>
<b>G19364</b>	<b>6in</b>

**GENFITT**

**CELEBRATING**



**OF EXCELLENCE**

**www.genfitt.ie**

**DISCOUNT**  
**SALE**

Code: **G20382**

**SUPER ELASTIC HOSE FOR  
DRIBBLE BAR**

- Working pressure: 5 bar.
- Bursting Pressure: 15 bar.
- Length: 50m coil.
- Outer Diameter: 45.8mm.
- Inner Diameter: 40mm.
- Sold per metre.



**€5.00  
ONLY**



**STANDARD BOLT  
TYPE HOSE CLIP**

Standard bolt type hose clips suitable for clamping hosing to hose tails and couplings. BZP finish. Material: Steel. The suitability listed below.

<b>G11060</b>	<b>BOLT TYPE 52-55mm</b>
<b>G11061</b>	<b>BOLT TYPE 60-63mm</b>
<b>G11063</b>	<b>BOLT-TYPE 68-73mm</b>
<b>G11064</b>	<b>BOLT-TYPE 74-79mm</b>
<b>G11065</b>	<b>BOLT-TYPE 79-86mm</b>
<b>G11066</b>	<b>BOLT-TYPE 86-91mm</b>
<b>G15459</b>	<b>BOLT-TYPE 92-97mm</b>
<b>G11067</b>	<b>BOLT-TYPE 98-103mm</b>
<b>G11068</b>	<b>BOLT-TYPE 104-115mm</b>
<b>G11069</b>	<b>BOLT-TYPE 113-121mm</b>
<b>G11070</b>	<b>BOLT-TYPE 122-130mm</b>
<b>G11072</b>	<b>BOLT-TYPE 131-140mm</b>
<b>G11073</b>	<b>BOLT-TYPE 140-148mm</b>
<b>G11074</b>	<b>BOLT-TYPE 149-161mm</b>
<b>G11075</b>	<b>BOLT-TYPE 162-174mm</b>
<b>G11076</b>	<b>BOLT-TYPE 175-187mm</b>


**STAINLESS STEEL BOLT  
TYPE HOSE CLAMPS**

Material: Stainless Steel.  
Corrosion resistant.  
The suitability listed below is the  
recommended super elastic hose the  
clamp can be used with.  
Available in a range of sizes and  
bandwidths.

**W2 BOLT-TYPE**

<b>G20426</b>	<b>BOLT-TYPE 44-47mm</b>
<b>G20427</b>	<b>BOLT-TYPE 48-51mm</b>
<b>G20428</b>	<b>BOLT-TYPE 52-55mm</b>
<b>G20429</b>	<b>BOLT-TYPE 56-59mm</b>
<b>G20430</b>	<b>BOLT-TYPE 60-63mm</b>
<b>G20431</b>	<b>BOLT-TYPE 64-67mm</b>

**W4 BOLT-TYPE**

<b>G20464</b>	<b>BOLT-TYPE 44-47mm</b>
<b>G20465</b>	<b>BOLT-TYPE 48-51mm</b>
<b>G20466</b>	<b>BOLT-TYPE 52-55mm</b>
<b>G20467</b>	<b>BOLT-TYPE 56-59mm</b>
<b>G20468</b>	<b>BOLT-TYPE 60-63mm</b>
<b>G20469</b>	<b>BOLT-TYPE 64-67mm</b>


**HERTELL PTO DRIVE  
VACUUM PUMP KD-8000L**

Code: **G16211**

Vacuum pump with gearbox for  
cardan drive (DIN 9611 1.3/8in)  
540 or 1000 rpm. Can be driven  
with one hydraulic motor.  
Recommended oil for vanes: SAE  
20 (ISO-VG 68).

**DISCOUNT**

**SALE**


**HERTELL PTO DRIVE  
VACUUM PUMP KD-10,000L**

Code: **G16212**

Vacuum pump with gearbox for  
cardan drive (DIN 9611 1.3/8in)  
540 or 1000 rpm. Can be driven  
with one hydraulic motor.  
Recommended oil for vanes: SAE  
20 (ISO-VG 68).

**DISCOUNT**

**SALE**


**SLURRY PUMP  
MEC9000 LTR**

Code: **MEC9000M**

Drive Type - PTO 540rpm.  
Max Vacuum - 0.95 Bar.  
Max Relative Pressure - 1.5 BAR.

**NEW**





**SLURRY PUMP  
MEC11000 LTR**

Code: **MEC11000M**

Vacuum pump with gearbox for  
cardan drive (DIN 9611 1.3/8in)  
540 or 1000 rpm

**NEW**



**SLURRY PUMP  
MEC13500 LTR**

Code: **MEC13500M**

Lubrication system type: Forced.  
Vane type: Long Life. Max  
vacuum: 0.95 BAR

**NEW**



**PUMP OVERHAUL  
KIT MEC8000**

Code: **AME7KIT**

This set contains all components  
necessary to perform a standard  
overhaul.

**NEW**



**PUMP OVERHAUL  
KIT SE10000**

Code: **AS7KIT**

This set contains all components  
necessary to perform a standard  
overhaul

**NEW**



**MUST  
BUY**  
In Packs of  
**4**

**VACUUM PUMP  
LUBRICATING OIL 5LTR**

Code: **50121005WEKR**

High flash point, low volatility and  
excellent resistance to foaming

**NEW**



**STANDARD STEM GATE  
VALVE BOLT X BOLT**

Code: **G8870**

End Type 1: 4 Bolt Flange.  
End Type 2: 4 Bolt Flange.  
Size 1: 6in (152.4mm).  
Size 2: 150 x 150mm.  
Material: Brass

**DISCOUNT**

**SALE**

# CHECK OUT OUR GENFITT PTO ECO SHAFT RANGE

[www.genfitt.ie](http://www.genfitt.ie)



## GENFITT ECO WIDE ANGLE PTO SHAFT COMPLETE

Code: **G19153**

End Type 1: 1 3/8in - 6 Spline.  
End Type 2: 1 3/8in - 6 Spline.  
Universal Joint: 4.01 (27 x 75mm).  
Tube Profile: 3 Corner.  
**Size: T4 x 1200mm.**



## GENFITT ECO WIDE ANGLE PTO SHAFT COMPLETE SB

Code: **G19154**

End Type 1: 1 3/8in - 6 Spline.  
End Type 2: 1 3/8in - 6 Spline.  
Universal Joint: 4.01 (27 x 75mm).  
**Size: T6 x 1200mm.**  
**Shearbolt: 8mm.**



## GENFITT ECO WIDE ANGLE PTO SHAFT COMPLETE

Code: **G19155**

End Type 1: 1 3/8in - 6 Spline.  
End Type 2: 1 3/8in - 6 Spline.  
Universal Joint: 6.01 (30 x 92mm).  
Tube Profile: 3 Corner.  
**Size: T6 x 1200mm.**



**GENFITT ECO WIDE ANGLE  
PTO SHAFT COMPLETE**

Code: **G19157**

End Type 1: 1 3/8in - 6 Spline.  
End Type 2: 1 3/8in - 6 Spline.  
Universal Joint: 6.01 (30 x 92mm.  
27 x 100mm). Tube Profile: 3 Corner.  
**Size: T6 x 1210mm.**



**GENFITT ECO WIDE ANGLE  
PTO SHAFT COMPLETE SB**

Code: **G20129**

End Type 1: 1 3/8in - 6 Spline.  
End Type 2: 1 3/8in - 6 Spline.  
Universal Joint: 35 x 106.5mm.  
30.2 x 106mm. Star Profile.  
**Size: T8 x 1500mm.**



**GENFITT ECO WIDE ANGLE  
PTO SHAFT COMPLETE SB**

Code: **G20130**

End Type 1: 1 3/8in - 6 Spline.  
End Type 2: 1.3/4in - 20 Spline.  
Universal Joint: 35 x 106.5mm 3  
0.2 x 106mm. Star Profile.  
**Size: T8 x 1500mm.**



**COMPACT GATE  
VALVE HANDLE**

Code: **G18542**

Manual handle for opening and  
closing standard gate valves.  
**Suitability: 5in (127mm) -  
6in (152.4mm)**



**COUPLING BELL VALVE  
WITH SPRING RAM**

Code: **G18139**

Fully assembled with ram and  
spring kit. Comes fully assembled  
with ram and spring kit.  
End Type 1: **4 Bolt Flange.**  
End Type 2: **4 Bolt Flange.**  
**Size: 1: 6in (152.4mm)**

**DISCOUNT**

**SALE**



**RAM & SPRING KIT**

Code: **G8867**

Spring loaded hydraulic ram  
with expansion spring. Suitable  
for gate valves: G8870, G8871,  
G16698, G12272, G16645 &  
G12273. Zinc plated finish.

**DISCOUNT**

**SALE**





**SIGHT GLASS  
WITH HOLDER**

Code: **G17394**

Weld on vacuum tank sight glass.

**Size: 4in (101.6mm)**



**RIV FLANGED TUBE  
LEVEL INDICATOR**

RIV flanged tube level indicator.  
Flange plate 100mm both ends.

<b>G20103</b>	<b>1300mm</b>
<b>G20104</b>	<b>1500mm</b>

DISCOUNT

**SALE**



**SIPHON FLOAT VALVE**

Code: **G8829**

External secondary shut off valve  
for use on slurry tankers.

**Size: 80mm**

DISCOUNT

**SALE**



**PRIMARY SHUT OFF VALVE**

Code: **G18538**

**Size: 80mm.** Internal primary shut  
off valve for use on slurry tankers.  
Comes with two flotation rubber  
balls and housing to create shut off.  
Aluminium external elbow for  
attaching suction hose.



**VACUUM PUMP  
SAFETY VALVE**

Code: **G8827**

Vacuum pump safety valve.  
Suitable for Battioni and Hertell  
brands.

**Size: 1.1/2in**



**DECOMPRESSION VALVE**

Code: **G13298**

Spring operated pressure release  
decompression valve. End type 1:  
**Threaded.** Type: **Male.** Brass  
material.

**Size: 1.1/2in**



**PRESSURE GAUGE**Code: **G8826A**

Pressure gauge for 8,000 litre (G16211) and 10,000 litre (G16212) pumps. End type 1: **Threaded**. Type: **Male**.  
**Size: 1/2in**

**RUBBER INDICATOR BALL**Code: **G8924**

Siphon valve ball indicator. Type: **Cork Centre**. Rubber material.  
**Size: 100mm**

**PLASTIC INDICATOR BALL**Code: **G8925**

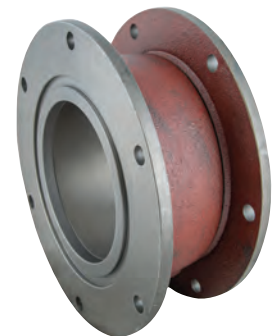
Siphon valve ball indicator. Plastic material.  
**Size: 120mm**

**RUBBER COUPLING JOINER**Code: **G18636**

Rubber joint. For use on slurry tankers for lazy arm and external boom functions.  
**Size: 6in (152.4mm)**

**RUBBER COUPLING FUNNEL**Code: **G18634**

Rubber funnel parts. For use on slurry tankers for lazy arm and external boom functions  
**Size: 6in - 150mm**

**SWIVEL COUPLING**

Swivel coupling for slurry tanker. Lazy arm and external boom functions.

<b>G18638</b>	<b>4in</b>
<b>G18639</b>	<b>6in</b>


**SWIVEL COUPLING  
FLANGE PLATE**

Weld on flange plate for assembly to swivel coupling.

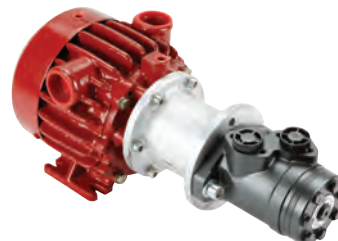
<b>G18641</b>	<b>4in</b>
<b>G18642</b>	<b>6in</b>


**HERTELL PRIMING  
PUMP B-400**

Code: **G18483**

Equipped with a ventilator to guarantee one optimal working temperature.

**With Coupling Support.**


**HERTELL PRIMING  
PUMP B-400**

Code: **G19844**

Equipped with a ventilator to guarantee one optimal working temperature.

**With Hydraulic Motor and Coupling Support.**


**HERTELL VANE  
KD-B400**

Code: **G17999**

Replacement vane for Hertell B400 vacuum pumps. OE Ref: 01BO004015. 6 vanes required per set. Vanes sold individually.


**MOTOR ONLY FOR  
HERTELL B-400 PUMP**

Code: **G19843**

Hydraulic Motor. For operating B-400 Hertell Pump.


**HERTELL LAU DOUBLE  
ACTING GATE VALVE**

Code: **G16232**

Four bolt flange plate x four bolt flange plate. Red Primer Finish. End Type 1 & 2: 4 Bolt Flange.

**Size: 1: 6in (152.4mm) Size 2: 150 x 150mm**



**HERTELL LAU DOUBLE  
ACTING GATE VALVE**

Code: **G18484**

Comes with Indicator.  
Four bolt flange plate x four bolt  
flange plate.

**Size: 1: 6in (152.4mm).**

**Size 2: 150 x 150mm.**



**SLURRY TRAILING SHOE  
RUBBER BOOT**

Code: **G18524**

Slurry trailing shoe rubber  
boot. Universal Rubber Boot to  
suit trailing shoe equipment.

**Size: 50 x 155mm.**



**SLURRY TRAILING SHOE  
RUBBER BOOT**

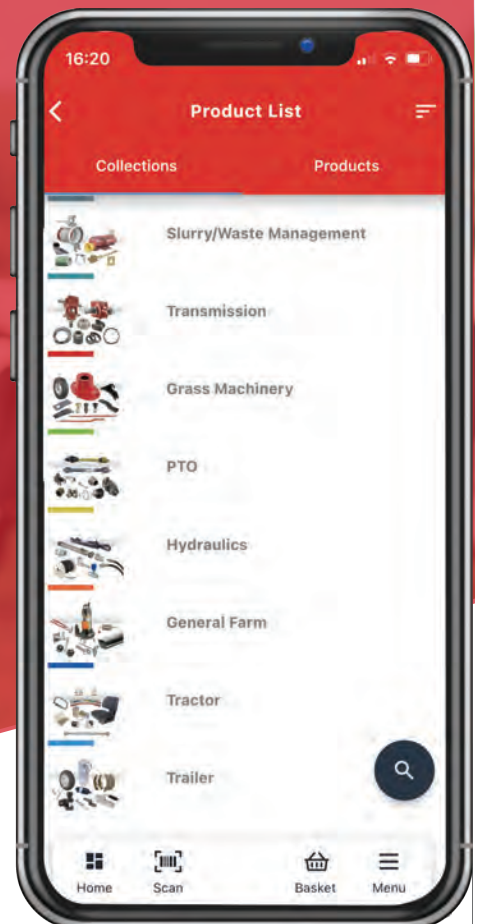
Code: **G18525**

Slurry trailing shoe rubber  
boot. Universal Rubber Boot to  
suit trailing shoe equipment.

**Size: 50 x 280mm.**

Introducing Our  
**GENFITT  
ORDERING APP**

**Download  
The App  
Now!**





**GENERATIONS OF KNOWLEDGE  
AT YOUR SERVICE**

Genfitt Mayo Ltd.  
Knock Road  
Kiltimagh  
Co. Mayo  
F12 K732  
Ireland

[info@genfitt.ie](mailto:info@genfitt.ie)

+353 (0) 94 - 938 1377

**[www.genfitt.ie](http://www.genfitt.ie)**

Genfitt is a **TRADE ONLY** wholesaler to the farming and agricultural industry. This promotion is valid for a limited time only, While stocks last.